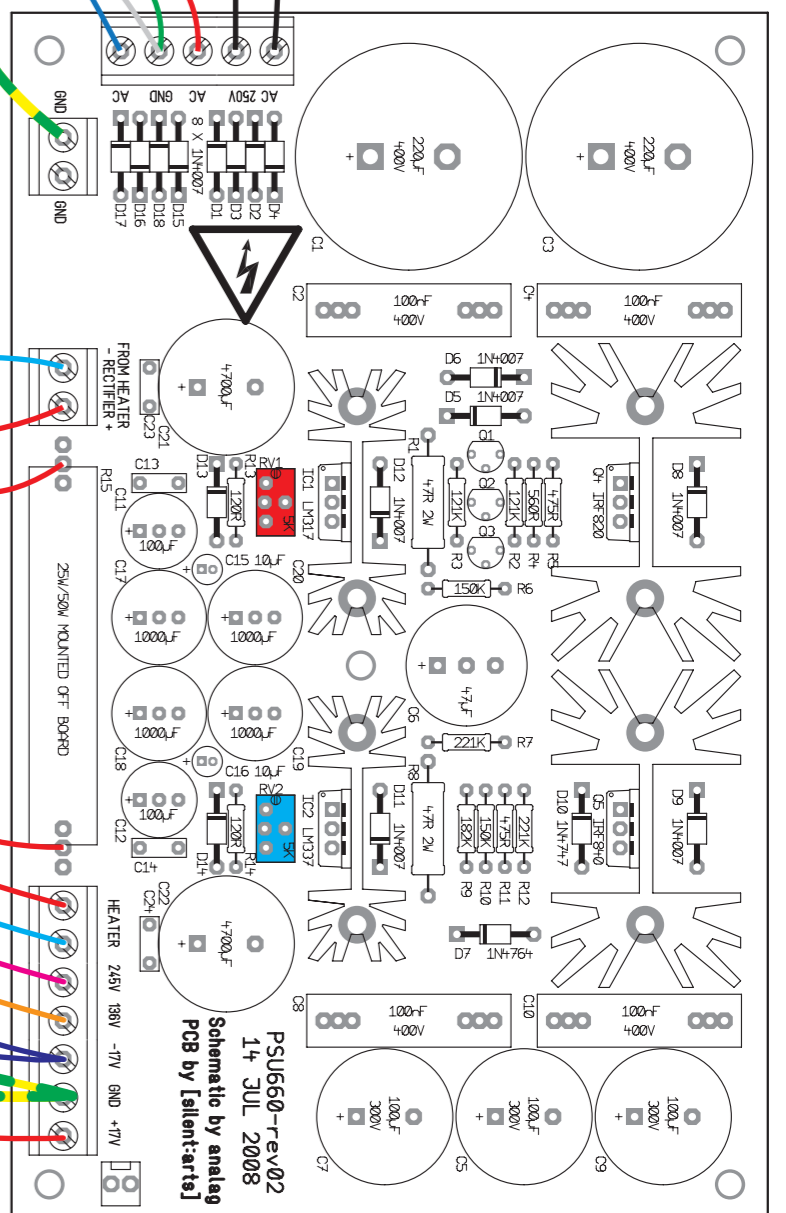
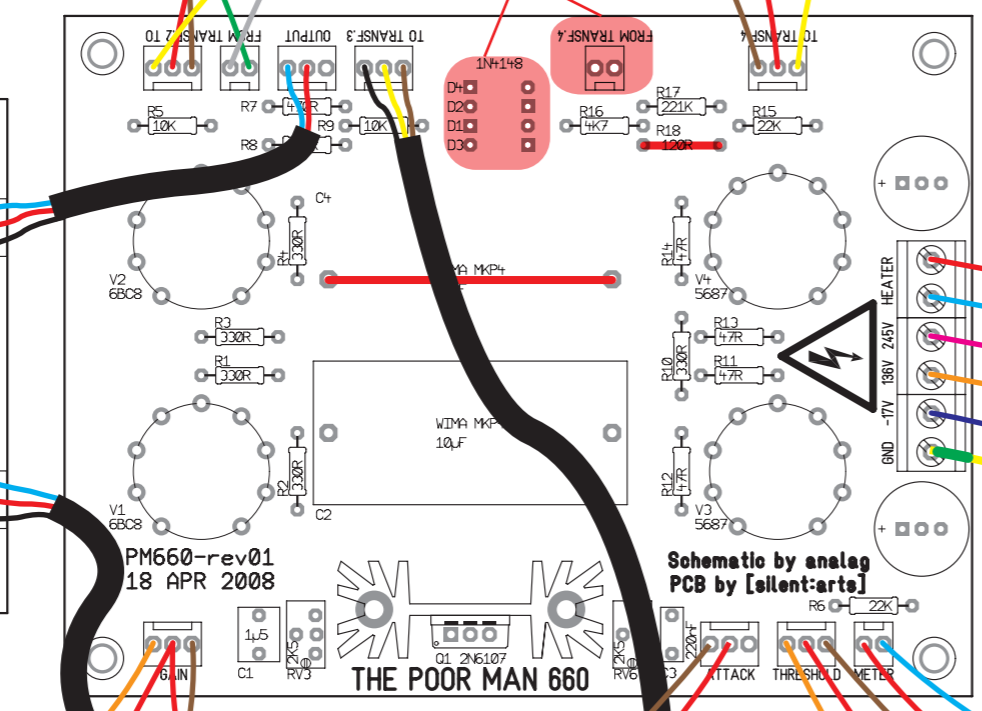
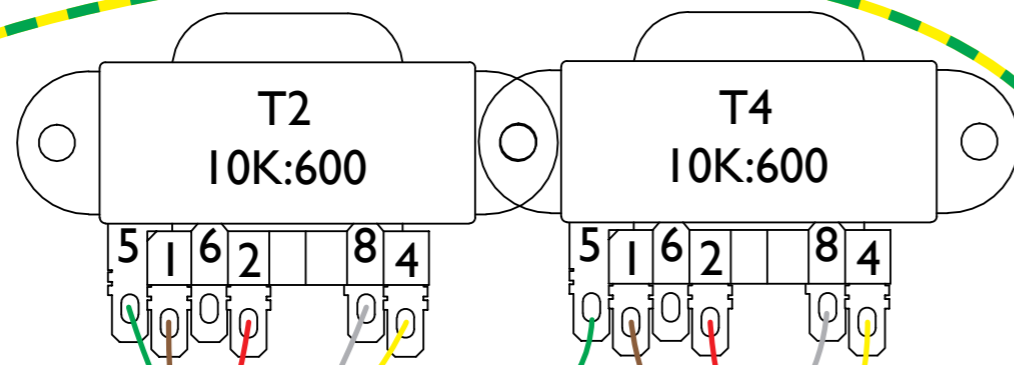
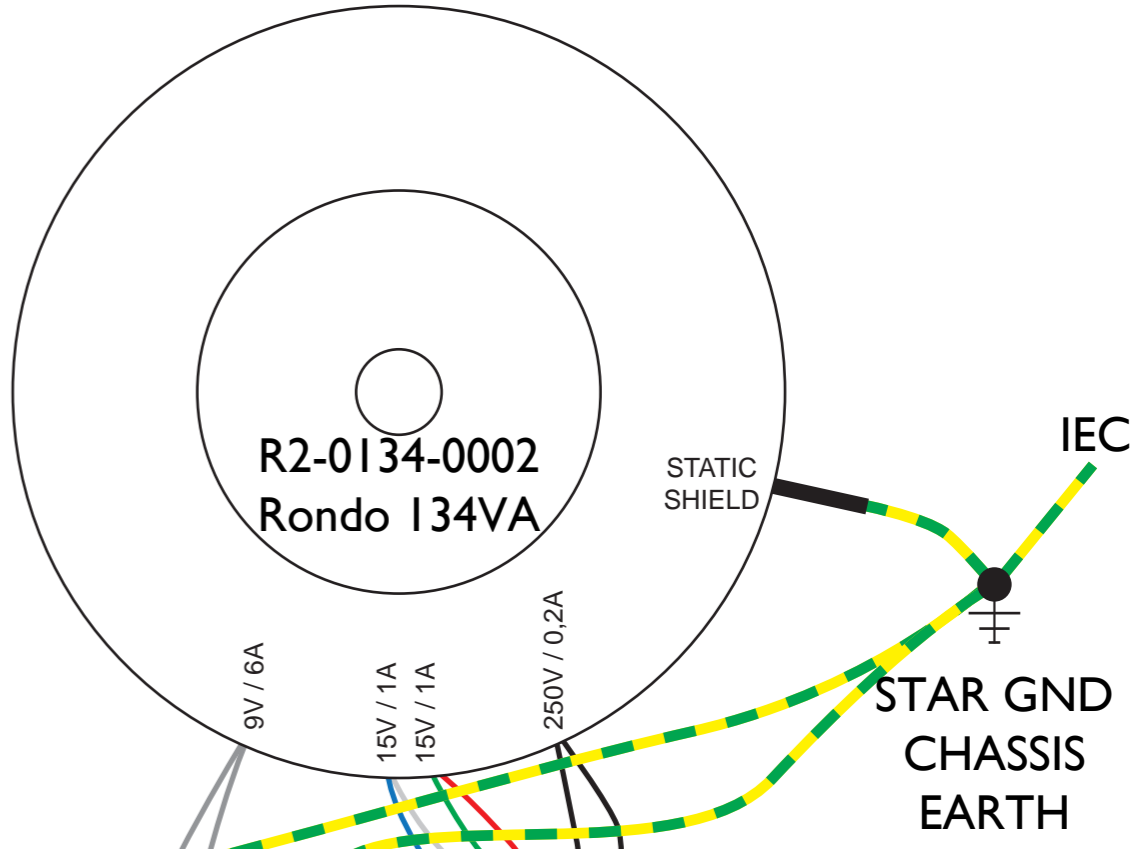


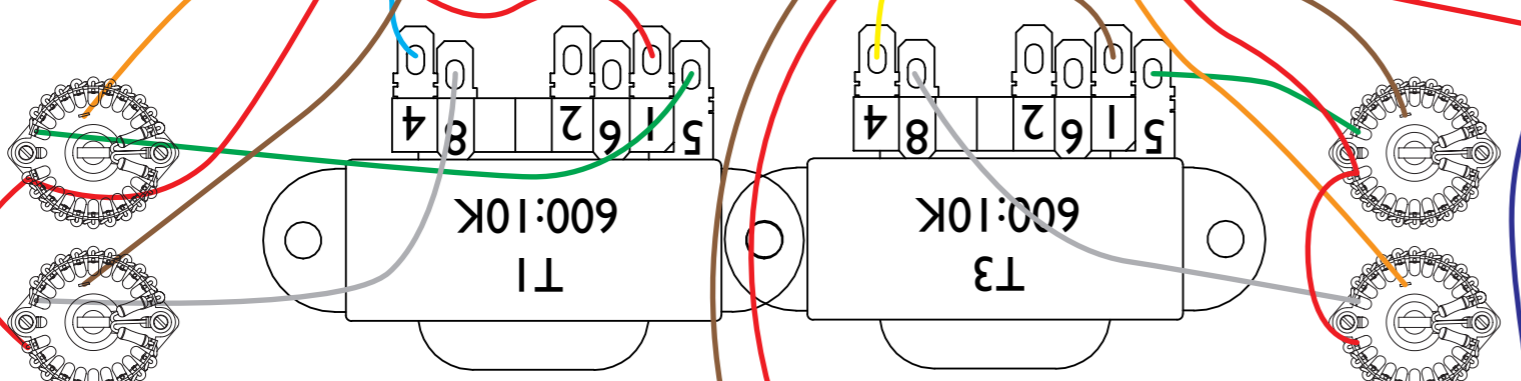
# POOR MAN 660+SCAB WIRING GUIDE

schematic by analog / PCBs by [silent:arts] SCAB by Lolo M  
edited by Moby  
11 APRIL 2009.  
R1-1.JUL 2009.



Bypass is with no Power supplied.  
use 12V relays

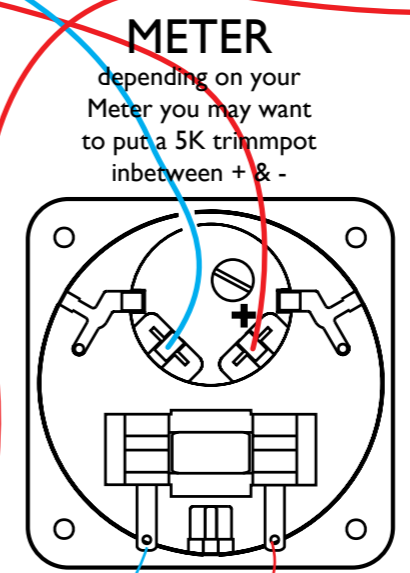
to stereo link switch



GAIN  
(Deck 1)  
(Deck 2)

TIME CONSTANT

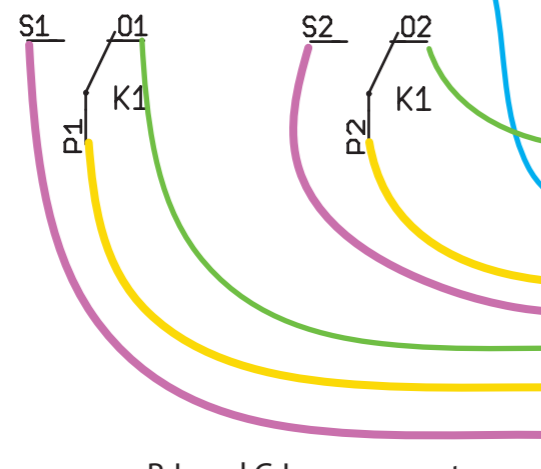
THRESHOLD  
(Deck 1)  
(Deck 2)



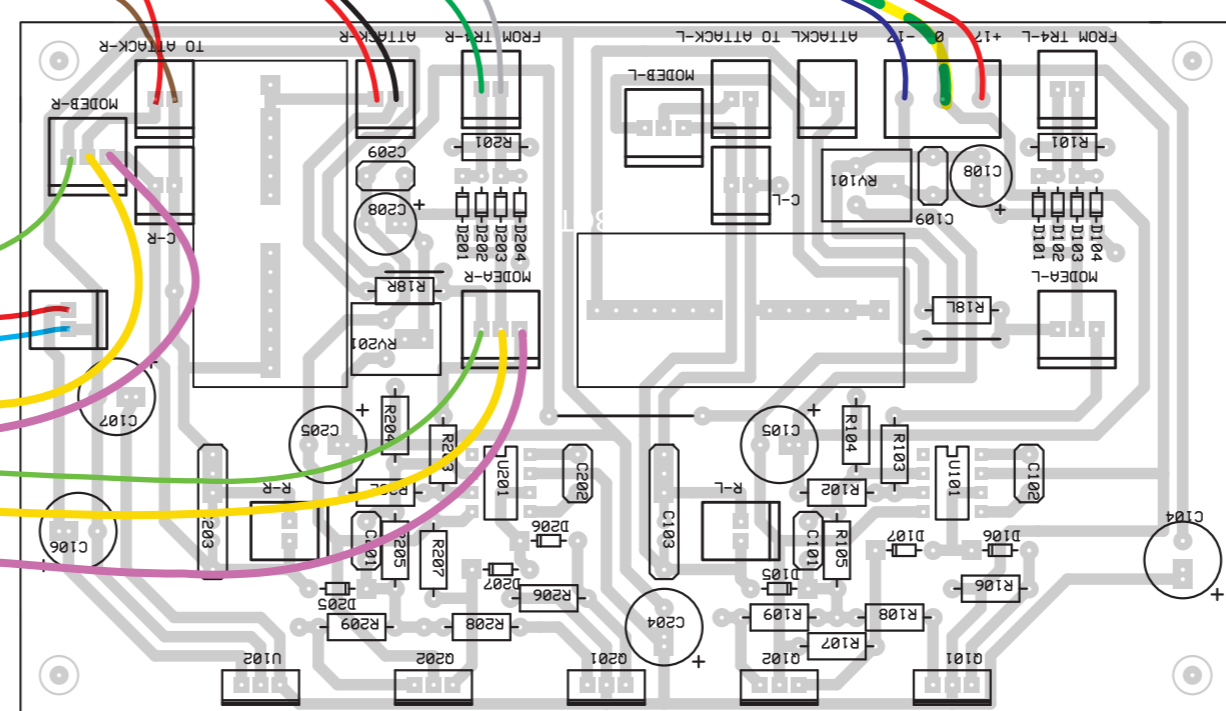
+17V is set to  
+17V using RV1  
-17V is set to  
-17V using RV2

I CAN'T FINA ANY MISTAKE, BUT PLAESE:  
**USE ON YOUR  
OWN RISK**  
[silent:arts]

DPDT shown in „Analog’s mode“



R-L and C-L are connectors  
to plug your own TC network



For PM670 do the same wiring with the  
second PM PCB and right part of the SCAB board.